

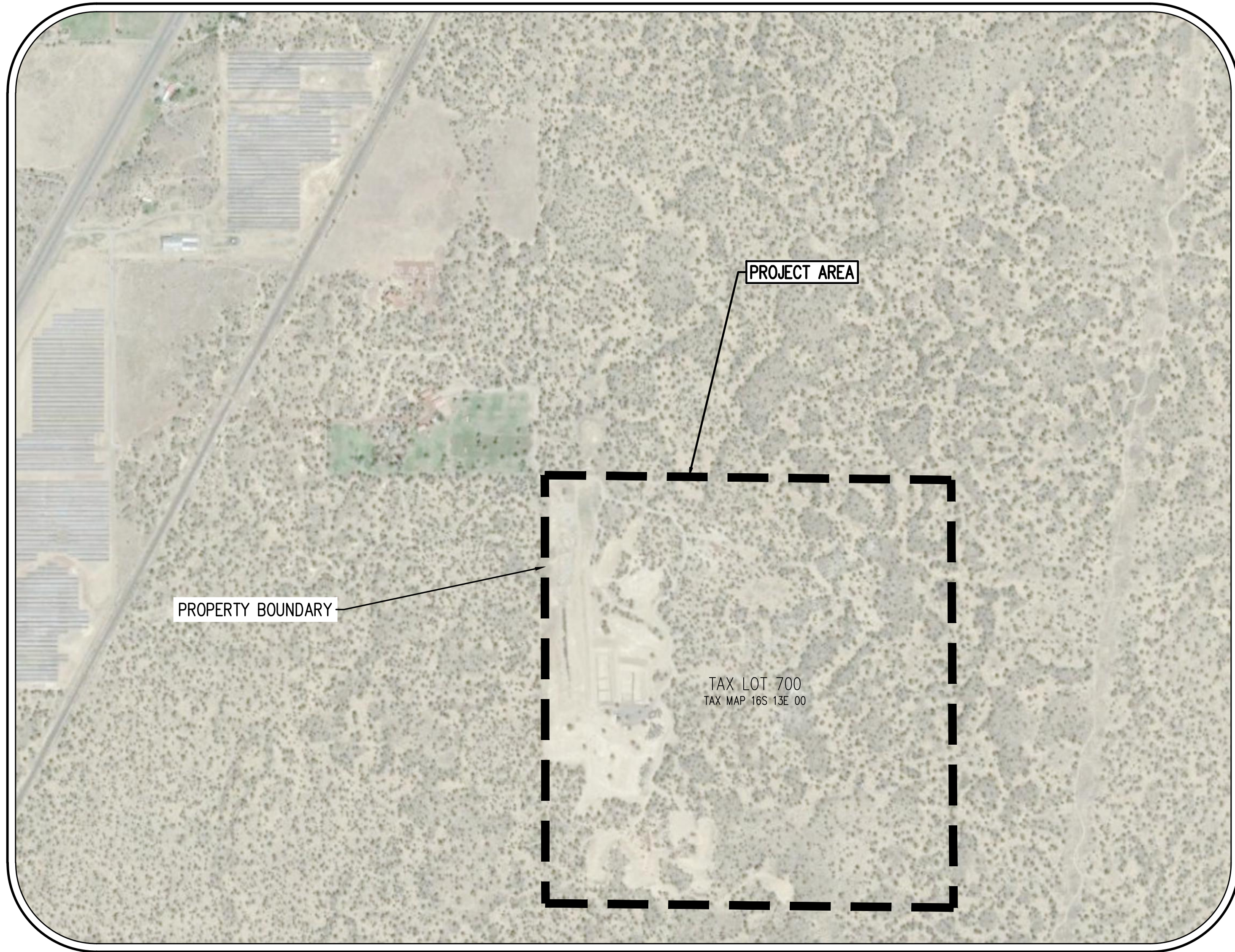
# REDMOND ROD AND GUN CLUB RANGE COMPLEX

## CONCEPTUAL PLAN

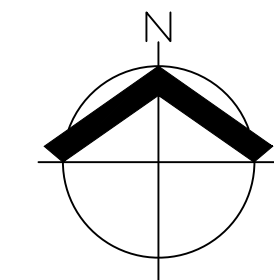


AKS ENGINEERING & FORESTRY, LLC  
12965 SW HERMAN RD, STE 100  
TUALATIN, OR 97062  
503.563.6151  
WWW.AKS-ENG.COM

ENGINEERING - SURVEYING - NATURAL RESOURCES  
FORESTRY - PLANNING - LANDSCAPE ARCHITECTURE



VICINITY MAP  
NTS

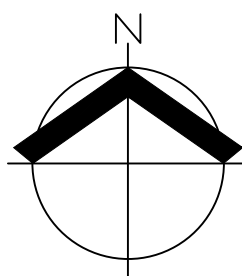


PROPERTY BOUNDARY

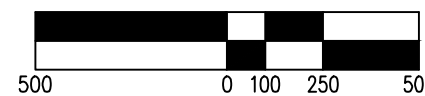
PROJECT AREA

TAX LOT 700  
TAX MAP 16S 13E 00

SITE MAP



SCALE: 1" = 500 FEET



### SHEET INDEX

- C000 COVER WITH SITE AND VICINITY MAPS
- C010 PROPOSED MAIN RANGE COMPLEX LAYOUT
- C011 PROPOSED MAIN RANGE COMPLEX - QUADRANT 1
- C012 PROPOSED MAIN RANGE COMPLEX - QUADRANT 2
- C013 PROPOSED MAIN RANGE COMPLEX - QUADRANT 3
- C014 PROPOSED MAIN RANGE COMPLEX - VEHICLE TRACKING
- C020 CONSTRUCTION DETAILS

### APPLICANT:

REDMOND ROD AND GUN CLUB  
PO BOX 14  
REDMOND, OR 97756

### CIVIL ENGINEERING:

AKS ENGINEERING & FORESTRY, LLC.  
CONTACT: PAUL D. STULL III, PE, - PROJECT ENGINEER  
12965 SW HERMAN RD, STE 100  
TUALATIN, OR 97062  
P: (503) 563-6151  
F: (503) 563-6152

### PROJECT LOCATION:

TAX LOT 101 DESCHUTES COUNTY ASSESSOR'S MAP 16 12 13.  
LOCATED IN SECTION 13, TOWNSHIP 16 SOUTH, RANGE 12 EAST,  
WILLAMETTE MERIDIAN, DESCHUTES COUNTY. AS WELL AS TAX  
LOT 700 DESCHUTES COUNTY ASSESSOR'S MAP 16 13 00.  
LOCATED IN TOWNSHIP 16 SOUTH, RANGE 13 EAST, WILLAMETTE  
MERIDIAN, DESCHUTES COUNTY, OREGON.

### PROPERTY DESCRIPTION:

LOCATED APPROXIMATELY 7.4 MILES SOUTH OF REDMOND  
OREGON.

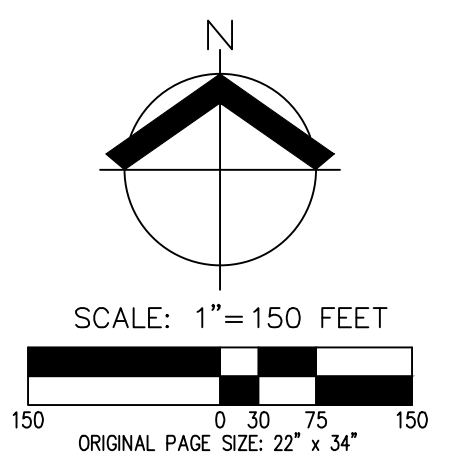
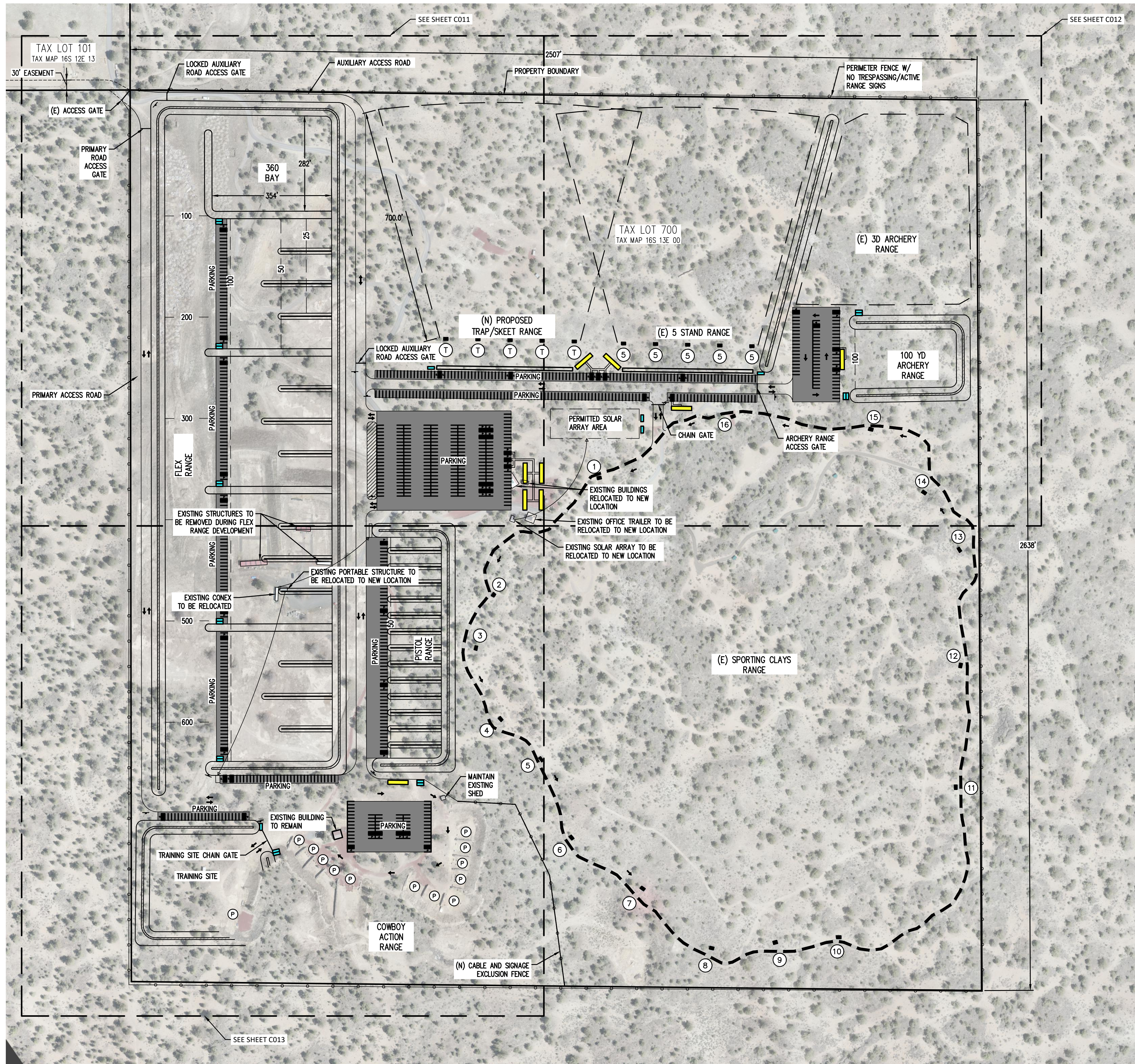
### PROJECT PURPOSE:

GUN CLUB BALLISTIC STUDY AND SITE MASTER PLAN.

COVER WITH SITE AND VICINITY MAPS  
REDMOND ROD AND GUN CLUB  
RANGE COMPLEX  
REDMOND, OREGON

JOB NUMBER:	9276
DATE:	8/8/2023
DESIGNED BY:	PS
DRAWN BY:	SCB
CHECKED BY:	PS

C000



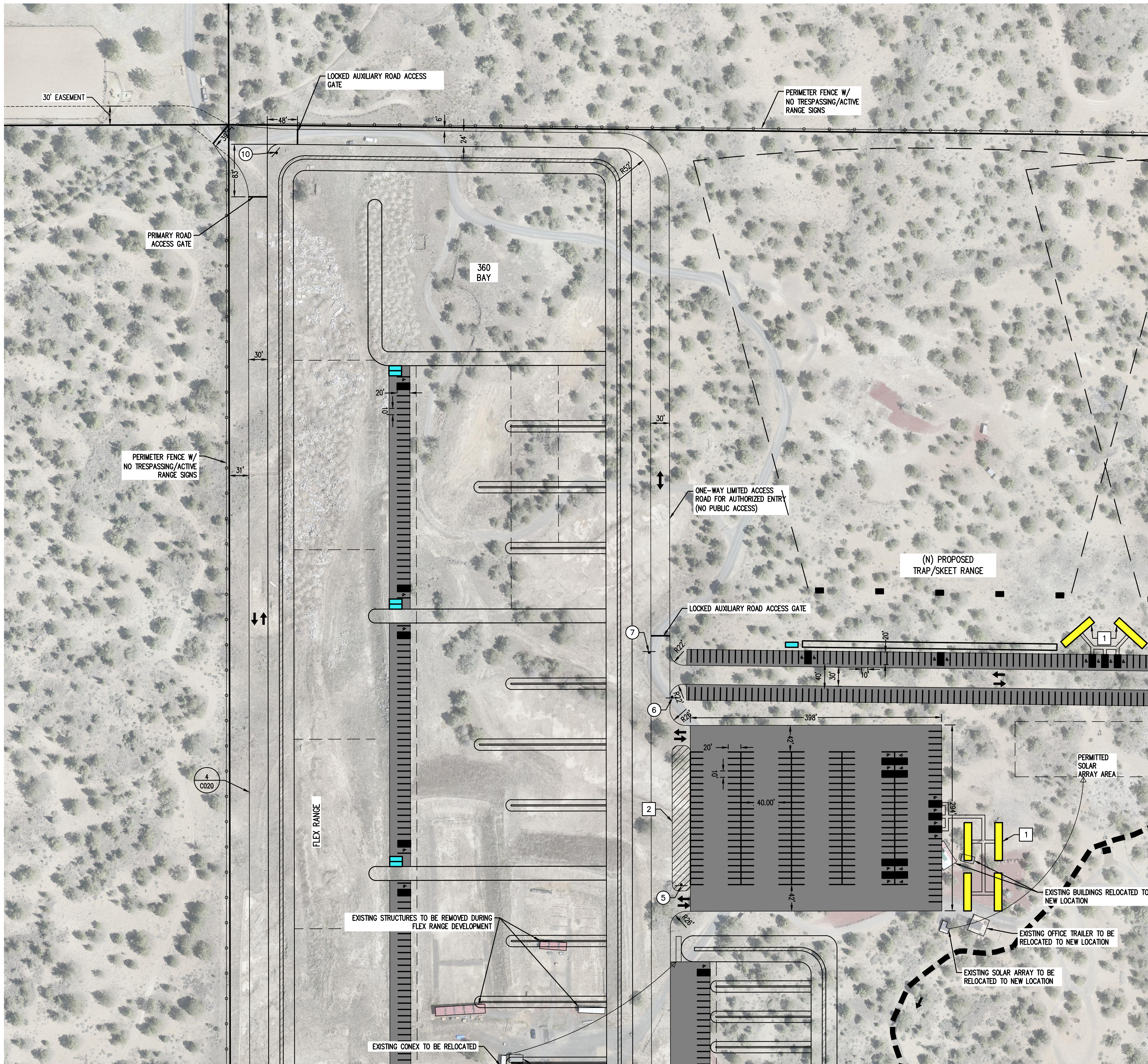
SITE PLAN ITEMS		
PLAN ITEM	APPLICABLE?	NOTES
SCALE OF DRAWINGS, NORTH ARROW	YES	
DIMENSIONS FOR LOTS, BUILDINGS, DRIVEWAYS AND PARKING	YES	LOT DIMENSIONS SHOWN
EXISTING LANDSCAPE AREAS AND OTHER PROPOSED IMPROVEMENTS	NO	
EXISTING TOPOGRAPHY AND PROPOSED GRADING	YES	EXISTING CONTOURS SHOWN
STORM DRAINAGE SYSTEM	NO	
BUILDING LOCATION, NUMBER OF UNITS, FINISHED FLOOR ELEVATIONS, ENTRY LOCATION	YES	EXISTING STRUCTURES SHOWN WITH APPROXIMATE FFE
ADJOINING STREETS AND RIGHTS-OF-WAY	NO	NO ADJACENT STREET OR ROW
ACCESS AND CIRCULATION PATTERNS, PARKING, DRIVEWAYS, LOADING AND MANEUVERING SPACE	YES	SEE CIRCULATION PLAN SHEET
SIDEWALKS, PATIOS, COURTYARDS AND DECKS	NO	NONE ON SITE
FENCES, SCREENS AND RETAINING WALLS, INCLUDING HEIGHTS AND MATERIALS	YES	PROPOSED FENCE SHOWN
VISIBLE UTILITIES, ELECTRIC, GAS AND POWER LINES	NO	NONE ON SITE
EXTERIOR LIGHTING	YES	LIGHT LOCATION SHOWN
SIGN LOCATIONS, ELEVATIONS, MATERIALS AND COLOR	NO	
PHASING PLAN (IF APPLICABLE)	NO	
PROVISIONS FOR HANDICAPPED PERSONS	YES	ADA PARKING STALLS SHOWN
PROPOSED PUBLIC IMPROVEMENTS	NO	
LOCATION OF WELL AND SEPTIC SYSTEMS	NO	

- LEGEND:**
- (E) - EXISTING FEATURE
  - (N) - NEW IMPROVEMENT
  - (P) - PISTOL RANGE
  - (PR) - PISTOL AND RIFLE RANGE
  - (#) - SPORTING CLAY RANGE STATION
  - (T) - TRAP RANGE
  - (5) - 5 STAND RANGE
  - SINGLE WIDE OFFICE TRAILER (12'X60')
  - CONEX BOX (8'X20')
  - SPORTING CLAY SHOOTING POSITIONS
  - TRAFFIC FLOW DIRECTION

NOTE:  
 1. PARKING AREAS TO HAVE APPROPRIATE ADA SPACING.  
 2. EXISTING CONEX STORAGE BOXES TO BE RELOCATED TO DESIGNATED LOCATIONS DURING SITE DEVELOPMENT.

**PROPOSED MAIN RANGE COMPLEX LAYOUT  
 REDMOND ROD AND GUN CLUB  
 RANGE COMPLEX  
 REDMOND, OREGON**

JOB NUMBER:	9276
DATE:	8/8/2023
DESIGNED BY:	PS
DRAWN BY:	SCB
CHECKED BY:	PS



**KEYED NOTES (SIGNAGE):**

- ① → TRAINING SITE  
→ COWBOY ACTION  
→ FLEX RANGE  
→ PISTOL RANGE
- ② ↑ FLEX RANGE  
→ TRAINING SITE  
→ COWBOY ACTION
- ③ → COWBOY ACTION  
→ PISTOL RANGE  
↑ TRAINING SITE
- ④ → PISTOL RANGE  
→ TRAP/SKEET RANGE  
→ 5 STAND RANGE  
→ SPORTING CLAYS RANGE  
→ ARCHERY RANGES
- ⑤ → TRAINING CENTER BUILDING  
↑ TRAP/SKEET RANGE  
↑ 5 STAND RANGE  
↑ SPORTING CLAYS RANGE  
↑ ARCHERY RANGES
- ⑥ → TRAP/SKEET RANGE  
→ 5 STAND RANGE  
→ SPORTING CLAYS RANGE  
→ ARCHERY RANGES
- ⑦ → TRAP/SKEET RANGE  
→ 5 STAND RANGE  
→ SPORTING CLAYS RANGE  
→ ARCHERY RANGES  
↑ PISTOL RANGE
- ⑧ ↑ SPORTING CLAYS RANGE
- ⑨ ↑ ARCHERY RANGES
- ⑩ "GENERAL WELCOME SIGN"  
TO INCLUDE ACCESS INFORMATION/CLUB  
INFORMATION FOR THE REDMOND ROD  
AND GUN CLUB RANGE

**KEYED NOTES:**

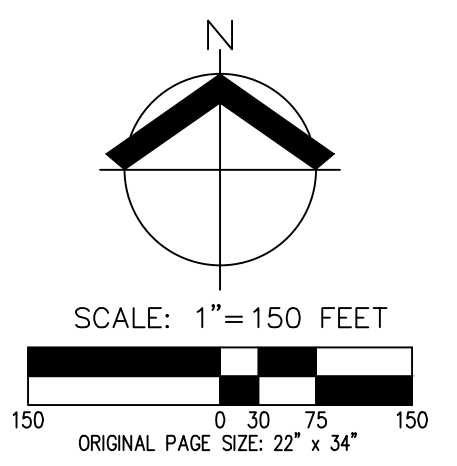
- 1 → ADA RAMP UP TO DOORS FROM PAVED SIDEWALK
- 2 → RAISED ISLAND WITH NATIVE VEGETATION

**LEGEND:**

- (E) - EXISTING FEATURE
- (N) - NEW IMPROVEMENT
- (P) - PISTOL RANGE
- (PR) - PISTOL AND RIFLE RANGE
- (#) - SPORTING CLAY RANGE STATION
- (T) - TRAP RANGE
- (S) - 5 STAND RANGE
- SINGLE WIDE OFFICE TRAILER (12'X60')
- CONEX BOX (8'X20')
- SPORTING CLAY SHOOTING POSITIONS
- TRAFFIC FLOW DIRECTION

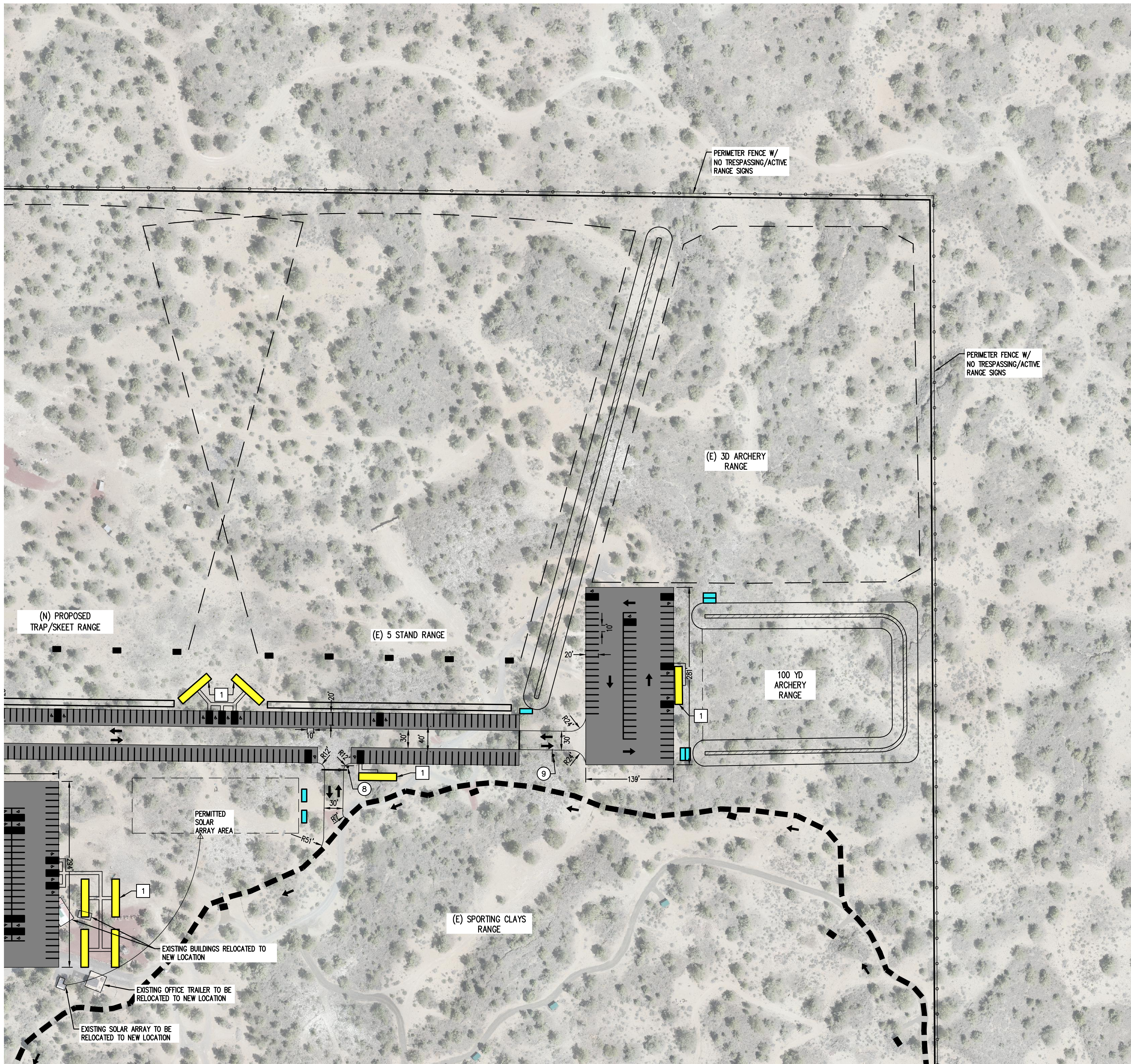
**NOTE:**

- 1. PARKING AREAS TO HAVE APPROPRIATE ADA SPACING.
- 2. EXISTING CONEX STORAGE BOXES TO BE RELOCATED TO DESIGNATED LOCATIONS DURING SITE DEVELOPMENT.



**PROPOSED MAIN RANGE COMPLEX - QUADRANT 1**  
**REDMOND ROD AND GUN CLUB**  
**RANGE COMPLEX**  
**REDMOND, OREGON**

JOB NUMBER:	9276
DATE:	8/8/2023
DESIGNED BY:	PS
DRAWN BY:	SCB
CHECKED BY:	PS



**KEYED NOTES (SIGNAGE):**

- ① → TRAINING SITE  
→ COWBOY ACTION  
→ FLEX RANGE  
→ PISTOL RANGE
- ② ↑ FLEX RANGE  
→ TRAINING SITE  
→ COWBOY ACTION
- ③ → COWBOY ACTION  
→ PISTOL RANGE  
↑ TRAINING SITE
- ④ → PISTOL RANGE  
→ TRAP/SKEET RANGE  
→ 5 STAND RANGE  
→ SPORTING CLAYS RANGE  
→ ARCHERY RANGES
- ⑤ → TRAINING CENTER BUILDING  
↑ TRAP/SKEET RANGE  
↑ 5 STAND RANGE  
↑ SPORTING CLAYS RANGE  
↑ ARCHERY RANGES
- ⑥ → TRAP/SKEET RANGE  
→ 5 STAND RANGE  
→ SPORTING CLAYS RANGE  
→ ARCHERY RANGES
- ⑦ → TRAP/SKEET RANGE  
→ 5 STAND RANGE  
→ SPORTING CLAYS RANGE  
→ ARCHERY RANGES  
↑ PISTOL RANGE
- ⑧ ↑ SPORTING CLAYS RANGE
- ⑨ ↑ ARCHERY RANGES
- ⑩ "GENERAL WELCOME SIGN"  
TO INCLUDE ACCESS INFORMATION/CLUB  
INFORMATION FOR THE REDMOND ROD  
AND GUN CLUB RANGE

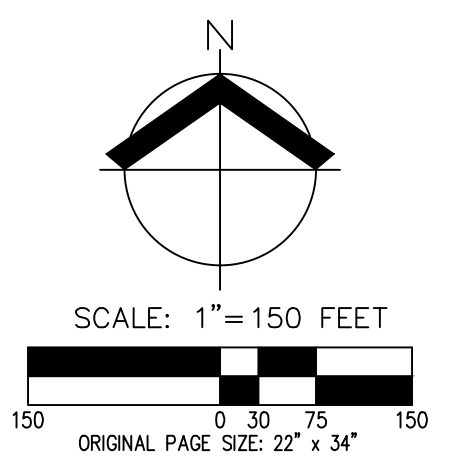
**KEYED NOTES:**

- ① → ADA RAMPS UP TO DOORS FROM PAVED SIDEWALK

**LEGEND:**

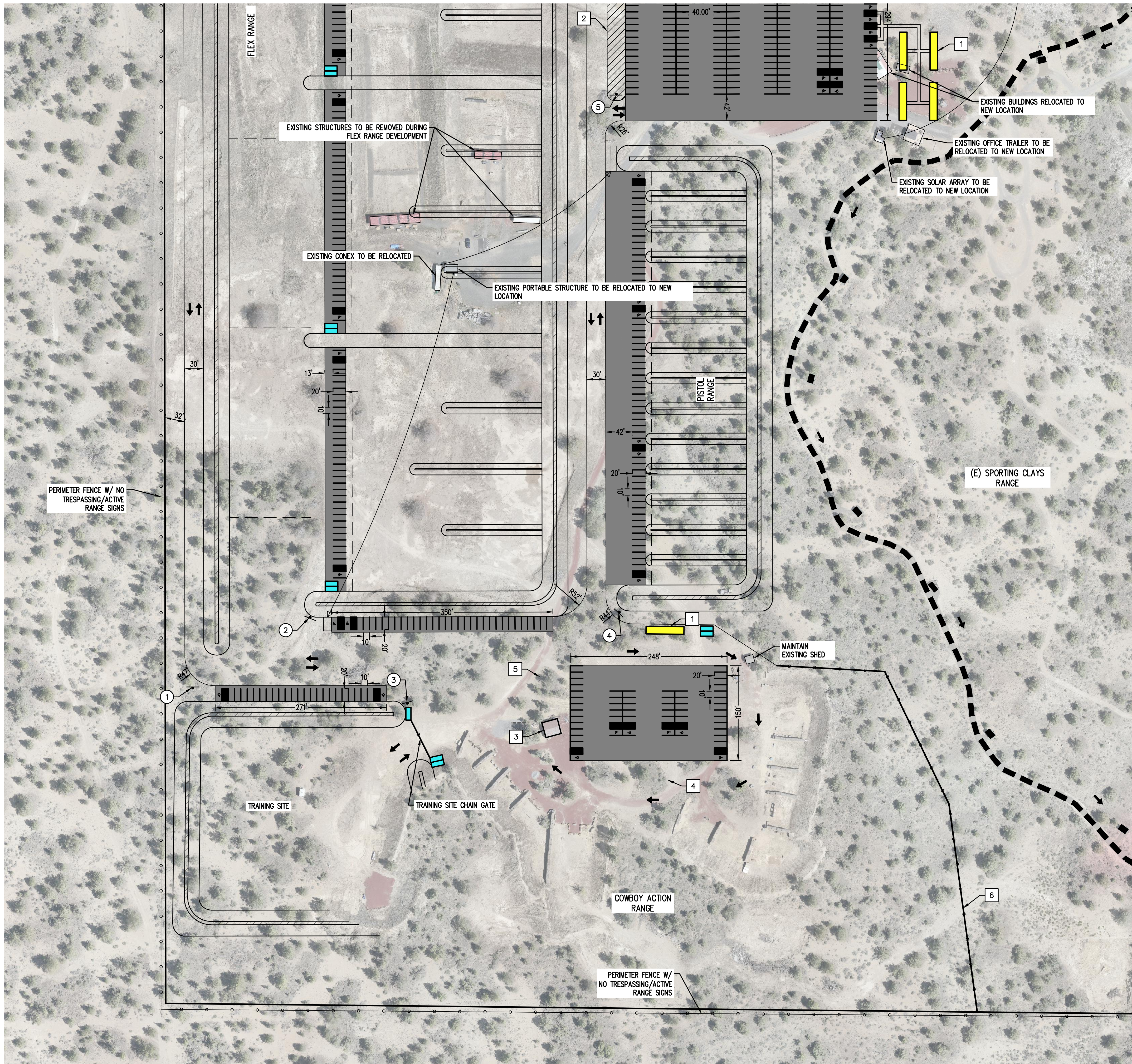
- (E) - EXISTING FEATURE
- (N) - NEW IMPROVEMENT
- (P) - PISTOL RANGE
- (PR) - PISTOL AND RIFLE RANGE
- (#) - SPORTING CLAY RANGE STATION
- (T) - TRAP RANGE
- (S) - 5 STAND RANGE
- SINGLE WIDE OFFICE TRAILER (12'X60')
- CONEX BOX (8'X20')
- SPORTING CLAY SHOOTING POSITIONS
- TRAFFIC FLOW DIRECTION

NOTE:  
1. PARKING AREAS TO HAVE APPROPRIATE ADA SPACING.  
2. EXISTING CONEX STORAGE BOXES TO BE RELOCATED TO DESIGNATED LOCATIONS DURING SITE DEVELOPMENT.



**PROPOSED MAIN RANGE COMPLEX - QUADRANT 2  
REDMOND ROD AND GUN CLUB  
RANGE COMPLEX  
REDMOND, OREGON**

JOB NUMBER:	9276
DATE:	8/8/2023
DESIGNED BY:	PS
DRAWN BY:	SCB
CHECKED BY:	PS



**KEYED NOTES (SIGNAGE):**

- ① → TRAINING SITE  
→ COWBOY ACTION  
→ FLEX RANGE  
→ PISTOL RANGE
- ② ↑ FLEX RANGE  
→ TRAINING SITE  
→ COWBOY ACTION
- ③ → COWBOY ACTION  
→ PISTOL RANGE  
↑ TRAINING SITE
- ④ → PISTOL RANGE  
→ TRAP/SKEET RANGE  
→ 5 STAND RANGE  
→ SPORTING CLAYS RANGE  
→ ARCHERY RANGES
- ⑤ → TRAINING CENTER BUILDING  
↑ TRAP/SKEET RANGE  
↑ 5 STAND RANGE  
↑ SPORTING CLAYS RANGE  
↑ ARCHERY RANGES
- ⑥ → TRAP/SKEET RANGE  
→ 5 STAND RANGE  
→ SPORTING CLAYS RANGE  
→ ARCHERY RANGES
- ⑦ → TRAP/SKEET RANGE  
→ 5 STAND RANGE  
→ SPORTING CLAYS RANGE  
→ ARCHERY RANGES  
↑ PISTOL RANGE
- ⑧ ↑ SPORTING CLAYS RANGE
- ⑨ ↑ ARCHERY RANGES
- ⑩ "GENERAL WELCOME SIGN"  
TO INCLUDE ACCESS INFORMATION/CLUB  
INFORMATION FOR THE REDMOND ROD  
AND GUN CLUB RANGE

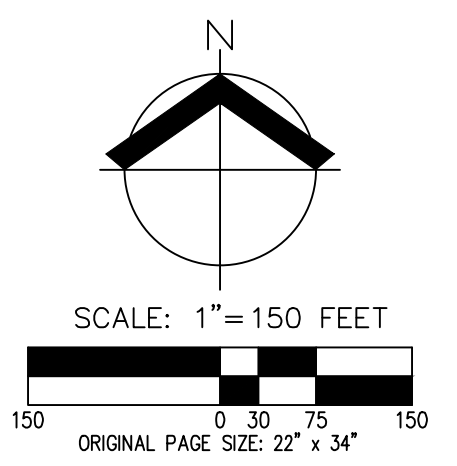
**KEYED NOTES:**

- 1 - ADA RAMP UP TO DOORS FROM PAVED SIDEWALK
- 2 - RAISED ISLAND WITH NATIVE VEGETATION
- 3 - EXISTING 400 SQ FT STORAGE STRUCTURE TO REMAIN
- 4 - OPEN COVERED STRUCTURE (60'X40')
- 5 - NEW 400 SF PROP "CHURCH" STRUCTURE
- 6 - EXCLUSIVE CHAIN/SIGNAGE LINE

**LEGEND:**

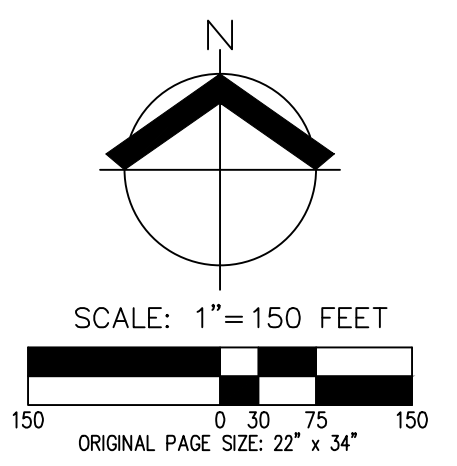
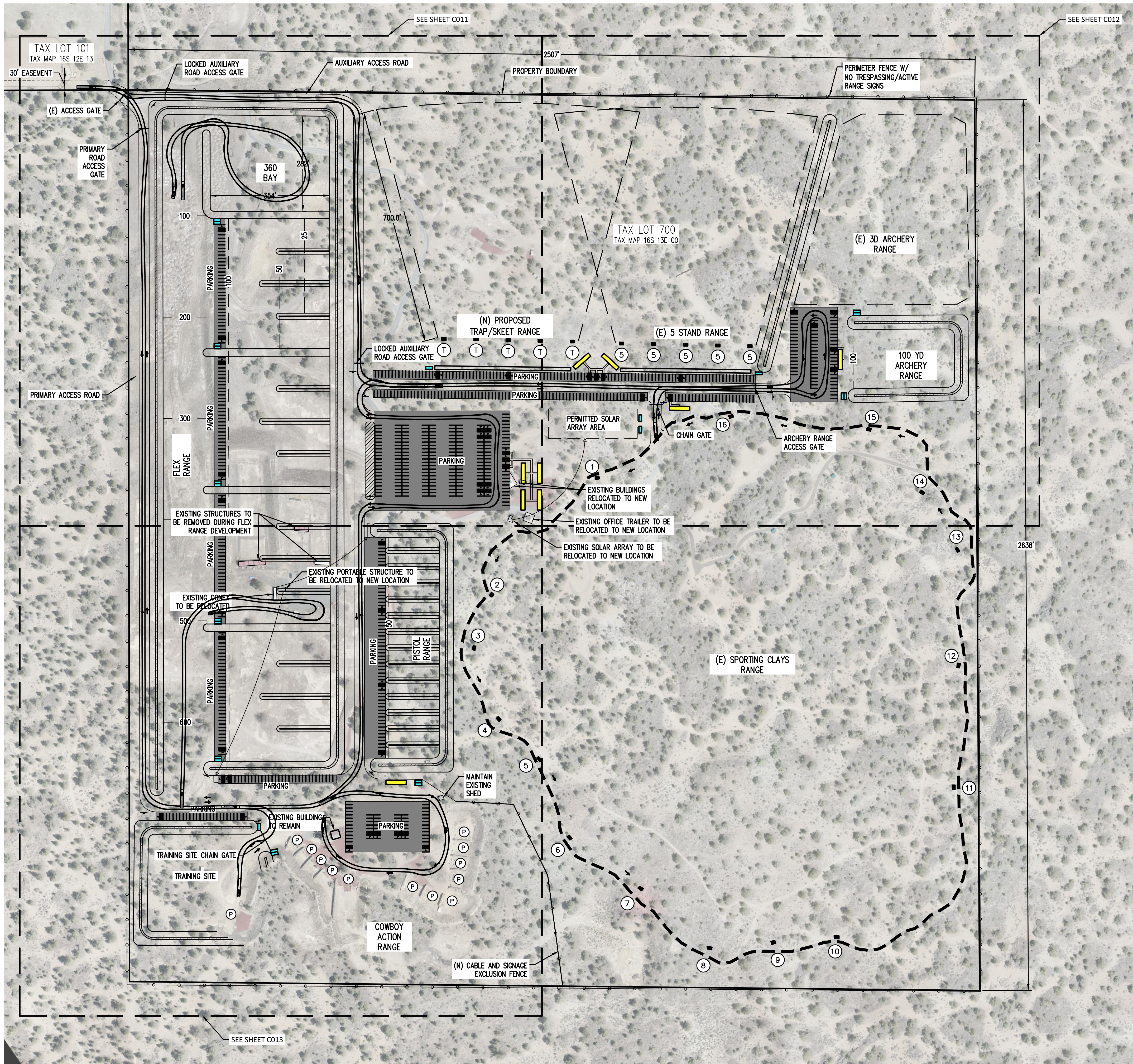
- (E) - EXISTING FEATURE
- (N) - NEW IMPROVEMENT
- (P) - PISTOL RANGE
- (PR) - PISTOL AND RIFLE RANGE
- (#) - SPORTING CLAY RANGE STATION
- (T) - TRAP RANGE
- (S) - 5 STAND RANGE
- SINGLE WIDE OFFICE TRAILER (12'X60')
- CONEX BOX (8'X20')
- SPORTING CLAY SHOOTING POSITIONS
- TRAFFIC FLOW DIRECTION

NOTE:  
1. PARKING AREAS TO HAVE APPROPRIATE ADA SPACING.  
2. EXISTING CONEX STORAGE BOXES TO BE RELOCATED TO DESIGNATED LOCATIONS DURING SITE DEVELOPMENT.



**PROPOSED MAIN RANGE COMPLEX - QUADRANT 3 - QUADRANT 3**  
**REDMOND ROD AND GUN CLUB**  
**RANGE COMPLEX**  
**REDMOND, OREGON**

JOB NUMBER:	9276
DATE:	8/8/2023
DESIGNED BY:	PS
DRAWN BY:	SCB
CHECKED BY:	PS



SITE PLAN ITEMS		
PLAN ITEM	APPLICABLE?	NOTES
SCALE OF DRAWINGS, NORTH ARROW	YES	
DIMENSIONS FOR LOTS, BUILDINGS, DRIVEWAYS AND PARKING	YES	LOT DIMENSIONS SHOWN
EXISTING LANDSCAPE AREAS AND OTHER PROPOSED IMPROVEMENTS	NO	
EXISTING TOPOGRAPHY AND PROPOSED GRADING	YES	EXISTING CONTOURS SHOWN
STORM DRAINAGE SYSTEM	NO	
BUILDING LOCATION, NUMBER OF UNITS, FINISHED FLOOR ELEVATIONS, ENTRY LOCATION	YES	EXISTING STRUCTURES SHOWN WITH APPROXIMATE FFE
ADJOINING STREETS AND RIGHTS-OF-WAY	NO	NO ADJACENT STREET OR ROW
ACCESS AND CIRCULATION PATTERNS, PARKING, DRIVEWAYS, LOADING AND MANEUVERING SPACE	YES	SEE CIRCULATION PLAN SHEET
SIDEWALKS, PATIOS, COURTYARDS AND DECKS	NO	NONE ON SITE
FENCES, SCREENS AND RETAINING WALLS, INCLUDING HEIGHTS AND MATERIALS	YES	PROPOSED FENCE SHOWN
VISIBLE UTILITIES, ELECTRIC, GAS AND POWER LINES	NO	NONE ON SITE
EXTERIOR LIGHTING	YES	LIGHT LOCATION SHOWN
SIGN LOCATIONS, ELEVATIONS, MATERIALS AND COLOR	NO	
PHASING PLAN (IF APPLICABLE)	NO	
PROVISIONS FOR HANDICAPPED PERSONS	YES	ADA PARKING STALLS SHOWN
PROPOSED PUBLIC IMPROVEMENTS	NO	
LOCATION OF WELL AND SEPTIC SYSTEMS	NO	

- LEGEND:**
- (E) - EXISTING FEATURE
  - (N) - NEW IMPROVEMENT
  - (P) - PISTOL RANGE
  - (PR) - PISTOL AND RIFLE RANGE
  - (#) - SPORTING CLAY RANGE STATION
  - (T) - TRAP RANGE
  - (5) - 5 STAND RANGE
  - SINGLE WIDE OFFICE TRAILER (12'X60')
  - CONEX BOX (8'X20')
  - SPORTING CLAY SHOOTING POSITIONS
  - TRAFFIC FLOW DIRECTION

NOTE:  
 1. PARKING AREAS TO HAVE APPROPRIATE ADA SPACING.  
 2. EXISTING CONEX STORAGE BOXES TO BE RELOCATED TO DESIGNATED LOCATIONS DURING SITE DEVELOPMENT.

**PROPOSED MAIN RANGE COMPLEX - VEHICLE TRACKING**  
**REDMOND ROD AND GUN CLUB**  
**RANGE COMPLEX**  
**REDMOND, OREGON**

JOB NUMBER:	9276
DATE:	8/8/2023
DESIGNED BY:	PS
DRAWN BY:	SCB
CHECKED BY:	PS

AKS DRAWING FILE: 9276 SITE PLAN-MASTER/DWG | LAYOUT: C014

